

BUILD YOUR OWN CODEPLUG

Chuck Kraly KØXM

January 11, 2018

This Document will show you how to merge the individual MD380 codeplug files found at <http://byrg.net>

It will also show how to convert them to what model radio you have as a target radio. All this will be performed in Tom NØGSG's "Contact Manager" program.

That can be found here: <http://n0gsg.com/contact-manager/>

**THIS DOCUMENT, ALONG WITH NØGSG CONTACT
MANAGER DO NOT WORK WITH MOTOROLA OR HYTERA
RADIOS**

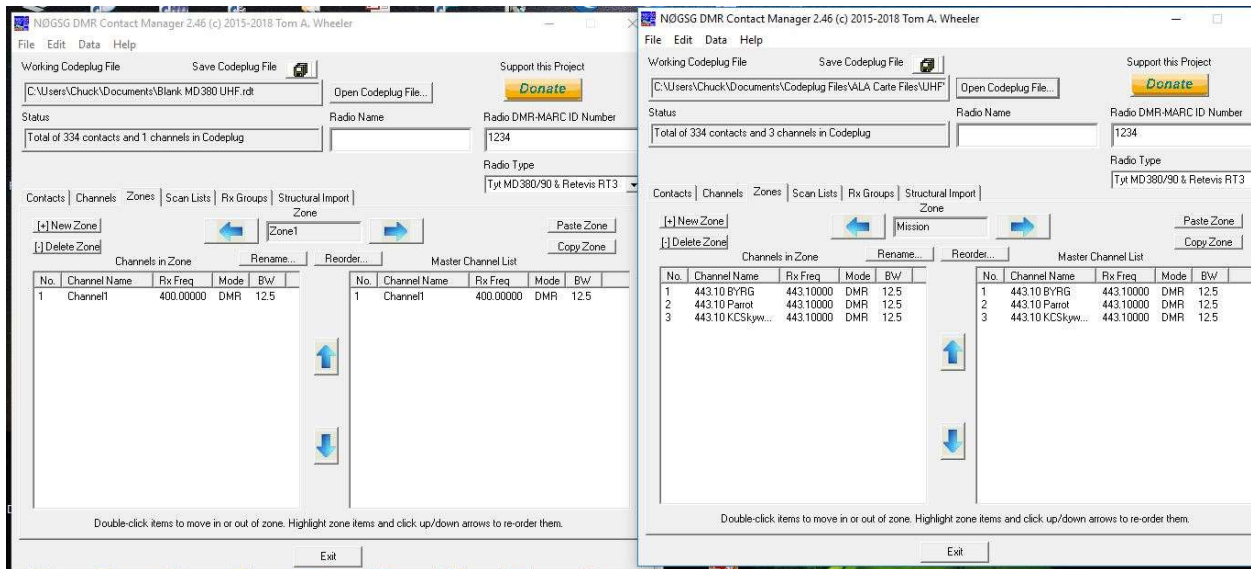
CREATING A NEW CODEPLUG FROM SCRATCH

To start, download the repeater files you want in your codeplug. Save them in a working folder and remember where you saved them!!!

Once you have all the files you desire, open the CPS for your radio....and create a BLANK new codeplug...Save the blank codeplug.

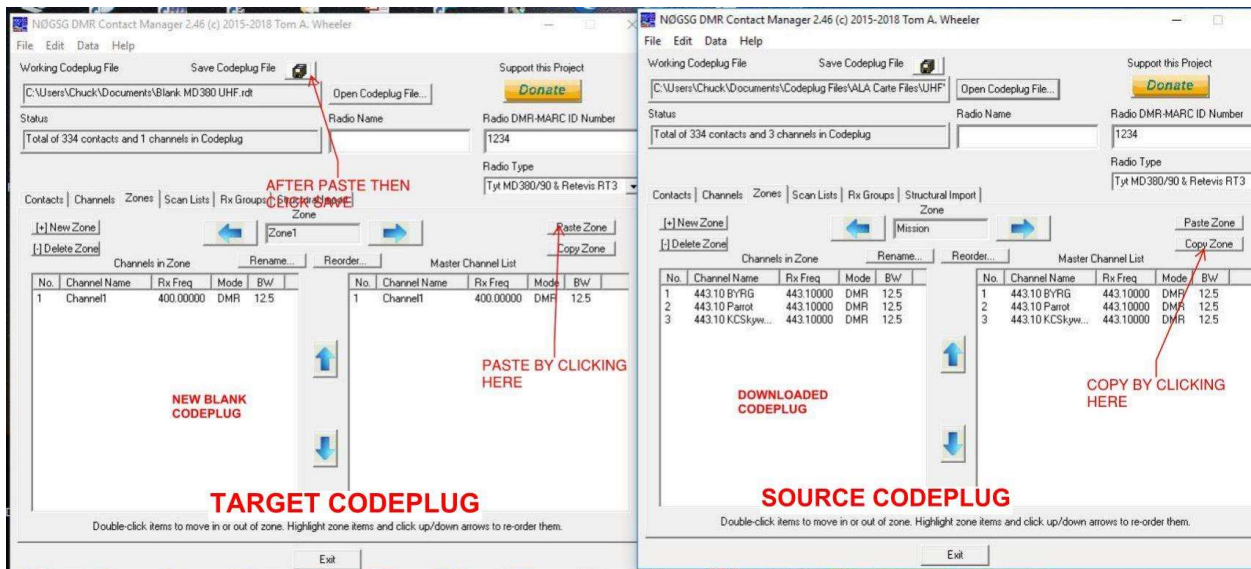
Open an instance of Contact Manager, and open the blank codeplug you created.

Open a SECOND instance of Contact Manager, and set the 2 windows side by side.



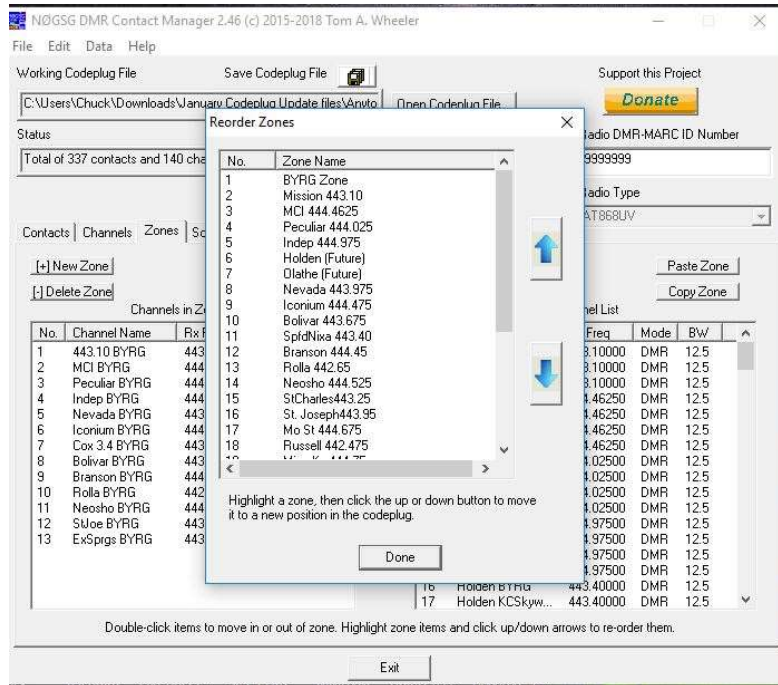
Open one of the downloaded files in the 2nd window. As shown on the right of the picture above.

Click the zone tab then click “Copy Zone”.



Then switch to the left window or target codeplug and hit “paste” in the zone tab
Do This for EACH repeater you would like in YOUR radio.

Once you are done, you can arrange the zones how you like by opening the newly created codeplug, clicking the zone tab and clicking “Reorder Zones”



REMEMBER TO ENTER YOUR DMR-MARC NUMBER

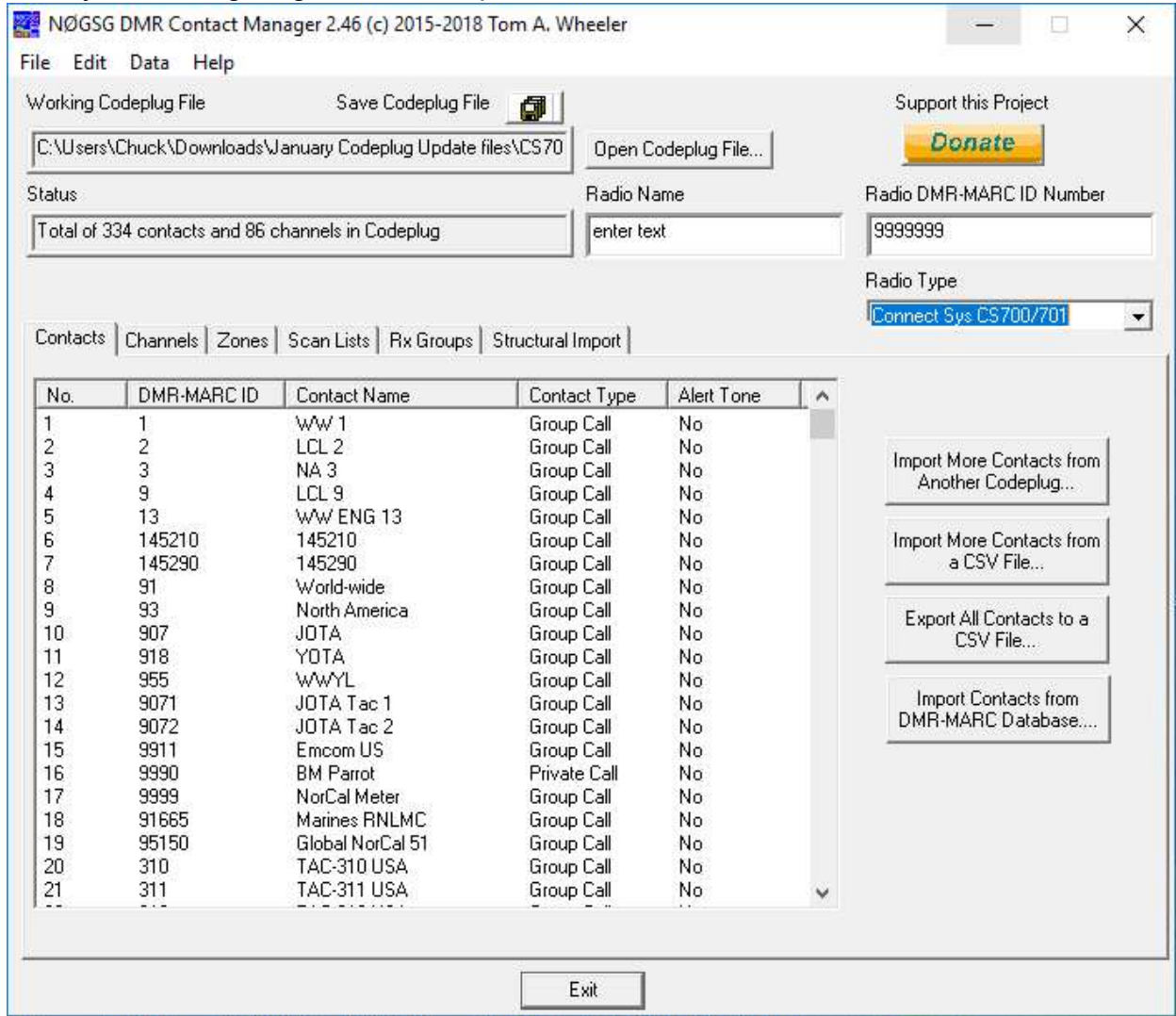
Remember....save your codeplug then write to your radio using CPS

See next page for converting to other radios.....

CONVERTING THE MD380 FORMAT FILE TO OTHER RADIOS

As you are aware, the merged file and the others are built for the MD380/390 radios. BUT they can be converted to other radios.

For MD380, MD390, CS700/701 files- just click the radio type button and select the radio you are targeting from the drop down box:



The screenshot shows the NØGSG DMR Contact Manager 2.46 software interface. The window title is "NØGSG DMR Contact Manager 2.46 (c) 2015-2018 Tom A. Wheeler". The menu bar includes "File", "Edit", "Data", and "Help".

At the top, there are fields for "Working Codeplug File" (C:\Users\Chuck\Downloads\January Codeplug Update files\CS70) and "Save Codeplug File" with an "Open Codeplug File..." button. A "Donate" button is also present.

The "Status" field shows "Total of 334 contacts and 86 channels in Codeplug". The "Radio Name" field contains "enter text". The "Radio DMR-MARC ID Number" field contains "9999999". The "Radio Type" dropdown menu is set to "Connect Sys CS700/701".

Below the status fields are tabs for "Contacts", "Channels", "Zones", "Scan Lists", "Rx Groups", and "Structural Import". The "Contacts" tab is active, displaying a table of contacts:

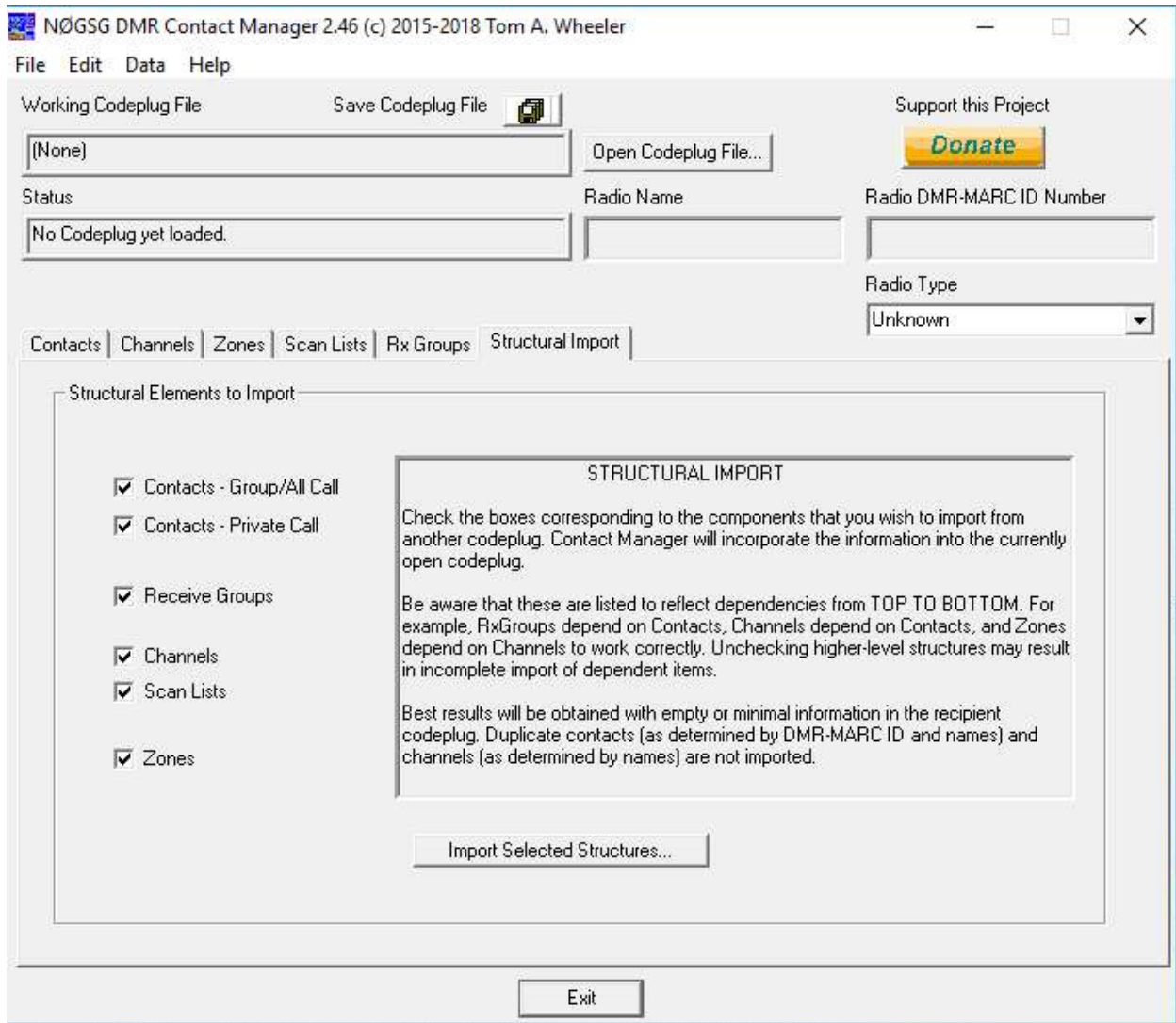
No.	DMR-MARC ID	Contact Name	Contact Type	Alert Tone
1	1	WW 1	Group Call	No
2	2	LCL 2	Group Call	No
3	3	NA 3	Group Call	No
4	9	LCL 9	Group Call	No
5	13	WW ENG 13	Group Call	No
6	145210	145210	Group Call	No
7	145290	145290	Group Call	No
8	91	World-wide	Group Call	No
9	93	North America	Group Call	No
10	907	JOTA	Group Call	No
11	918	YOTA	Group Call	No
12	955	WWYL	Group Call	No
13	9071	JOTA Tac 1	Group Call	No
14	9072	JOTA Tac 2	Group Call	No
15	9911	Emcom US	Group Call	No
16	9990	BM Parrot	Private Call	No
17	9999	NorCal Meter	Group Call	No
18	91665	Marines RNLMC	Group Call	No
19	95150	Global NorCal 51	Group Call	No
20	310	TAC-310 USA	Group Call	No
21	311	TAC-311 USA	Group Call	No

On the right side of the interface, there are four buttons: "Import More Contacts from Another Codeplug...", "Import More Contacts from a CSV File...", "Export All Contacts to a CSV File...", and "Import Contacts from DMR-MARC Database...". An "Exit" button is located at the bottom center of the window.

For the CS800/801, CS800D, MD2017, Anytone AT-D868UVE:

Using Contact Manager, open a blank codeplug for your target radio which you created in the CPS.

Click the “ Structural Import” Tab- and check what you wish to import from the existing codeplug you created



Once you are done:

ENTER YOUR DMR-MARC NUMBER

Save the file with a unique name.

Once you are finished, load into your radio with CPS

WORKING WITH EXISITING CODEPLUGS

Open your radio CPS and read and save the program in your radio (codeplug).

Open the file in Contact Manager.

Follow the steps above to merge the new codeplug contents – using copy/paste of the new zones or “structural import” and make the changes- only difference is the codeplug on the left instead of being a NEW codeplug, it will be **YOUR** codeplug. Add the new zones as desired...

Check the work, save, then load into your radio....**ENJOY**